

60x60x25mm (2.36"x2.36"x0.98")

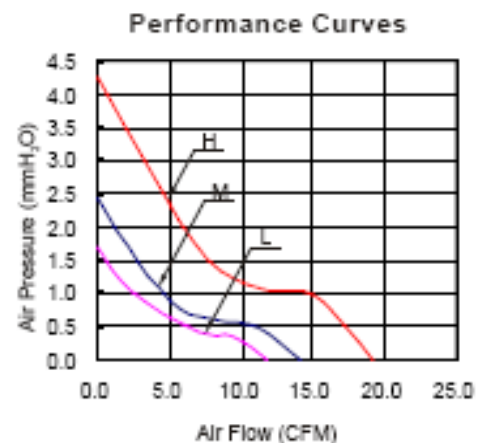
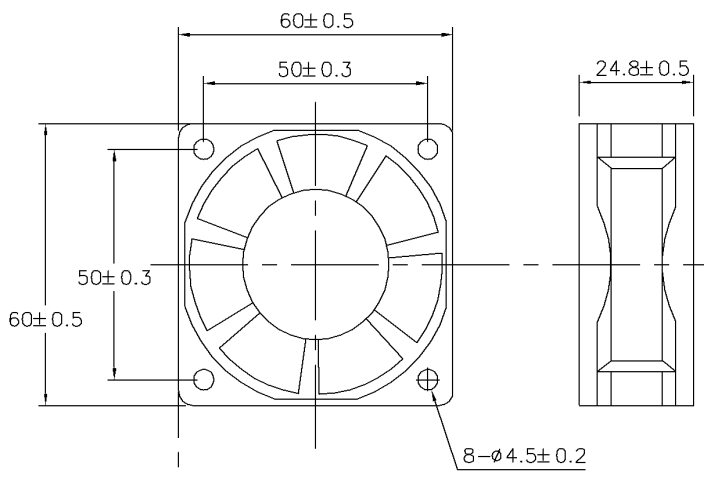


Frame:Plastic(UL:94-0)  
 Impeller:Plastic(UL:94-0)  
 Lead wire:UL 1007AWG24  
 Red wire positive (+)  
 Black Wire negative (-)  
 Operation Temperature:-10°C-70°C  
 Motor Protection: Impedance Protected  
 Reverse Polarity Protected  
 Safety approval: UL TUV CE

Specifications(Nominal)

S=Sleeve bearing B=One ball bearing D=Two ball bearing

Model No.	Bearing System Type	Rated Voltage	Speed Type	Rated Current	Rated Speed	Air Flow	Aire Pressure	Noise Level	Weight
		(VDC)		(A)	(RPM)	(CFM)	(mmAg)	(dBA)	(g)
HT□D06025	S/B/D	5	M	0.21	3500	18.42	3.08	26.0	50
			L	0.19	3000	15.81	1.92	22	
		12	E	0.29	5500	27	5.2	35	
			H	0.14	4000	22.36	4.83	33.0	
			M	0.13	3500	18.42	3.08	26.0	
			L	0.12	3000	15.81	1.92	22	
			X	0.1	2700	14.7	1.7	20	
		24	H	0.12	4000	22.36	4.83	33.0	
			M	0.11	3500	18.42	3.08	26.0	
			L	0.10	3000	14.81	1.92	22.0	



\* All reading are typical values at rated voltage.  
 \* Specifications subjected to change without notice